

COURSE NAME: ARTIFICIAL INTELLIGENCE
COURSE CODE: CIS 412

SYED TANGIM PASHA
LECTURER,

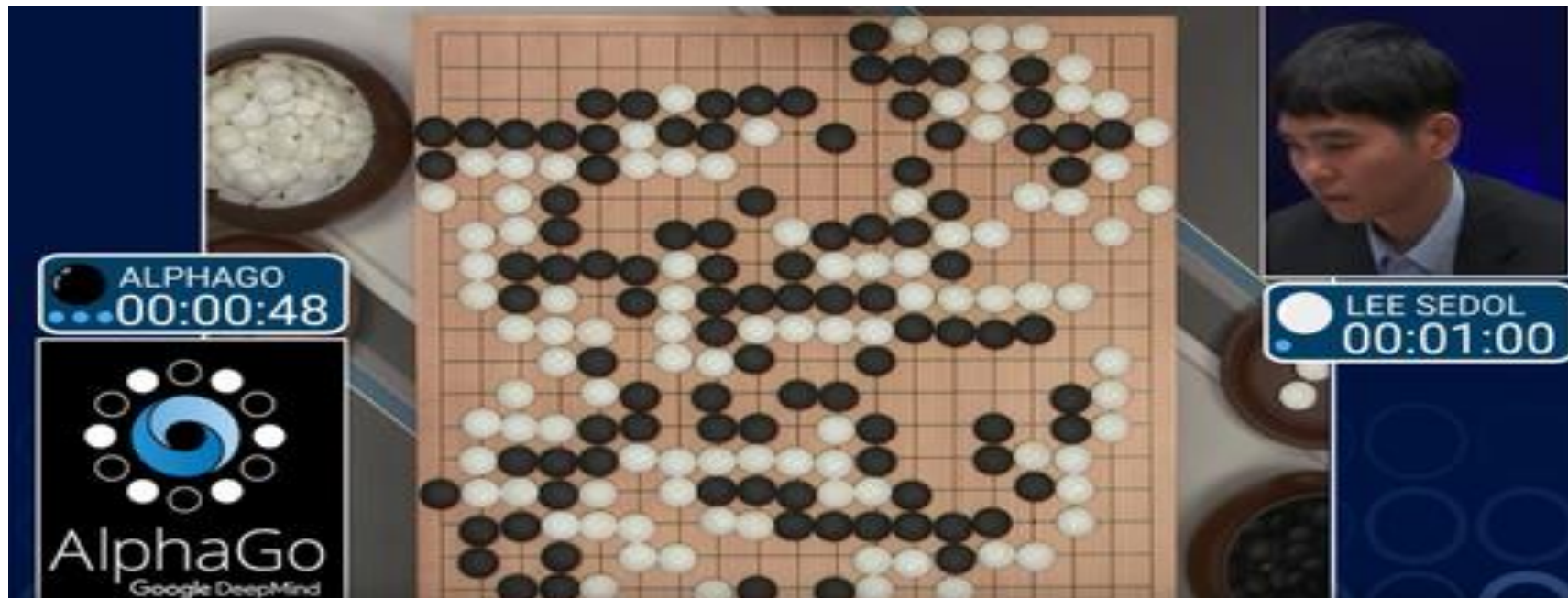
DEPARTMENT OF COMPUTING AND INFORMATION SYSTEM (CIS)
DAFFODIL INTERNATIONAL UNIVERSITY (DIU)
DHAKA, BANGLADESH

ARTIFICIAL INTELLIGENCE

- **Artificial Intelligence:** Artificial Intelligence (AI), the ability of a digital computer or computer-controlled robot to perform tasks commonly associated with intelligent beings. The term is frequently applied to the project of developing systems endowed with the intellectual processes characteristic of humans, such as the ability to reason, discover meaning, generalize, or learn from past experience.
- **Intelligence:** Intelligence has been defined in many ways: the capacity for abstraction, logic, understanding, self-awareness, learning, emotional knowledge, reasoning, planning, creativity, critical thinking, and problem-solving.
- **Learning:** Learning is the process of acquiring new understanding, knowledge, behaviors, skills, values, attitudes, and preferences.

ARTIFICIAL INTELLIGENCE

- **AlphaGo**: AlphaGo is a computer program that plays the board game **Go**. It was developed by **DeepMind** Technologies a subsidiary of **Google**.



ARTIFICIAL INTELLIGENCE

- Self Driving Cars
- Google Maps
- Text Autocorrect
- Automated Translation
- Chatbot
- Social Media
- Face Detection
- Robots
- Natural Language Processing (NLP)
- Computer Vision (CV)

ARTIFICIAL INTELLIGENCE

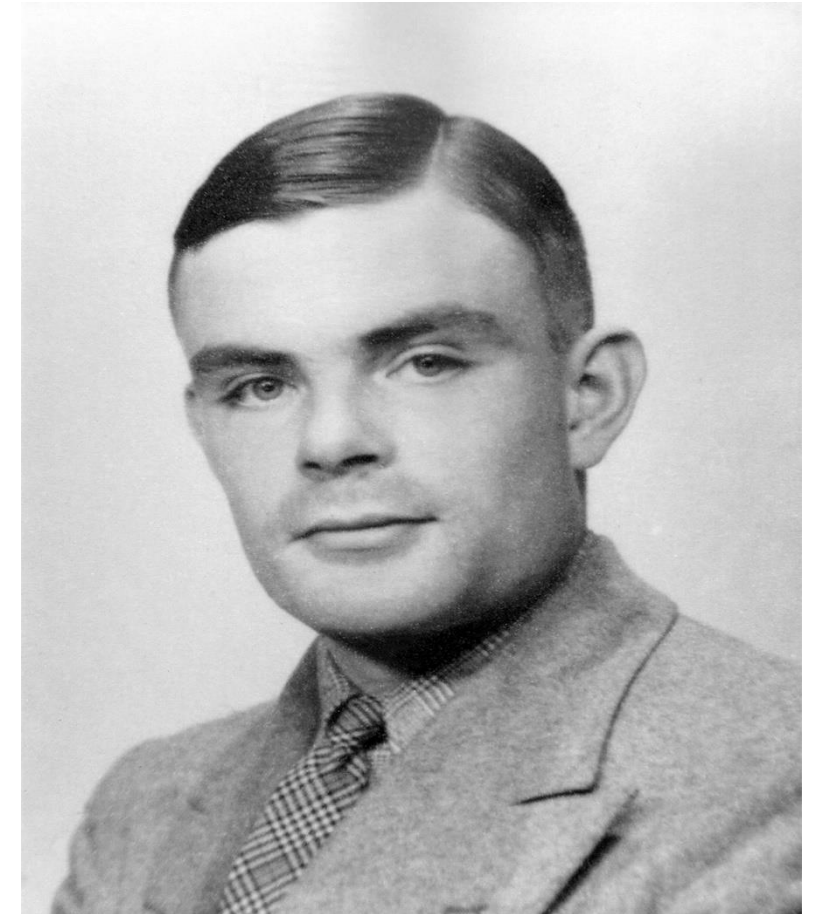
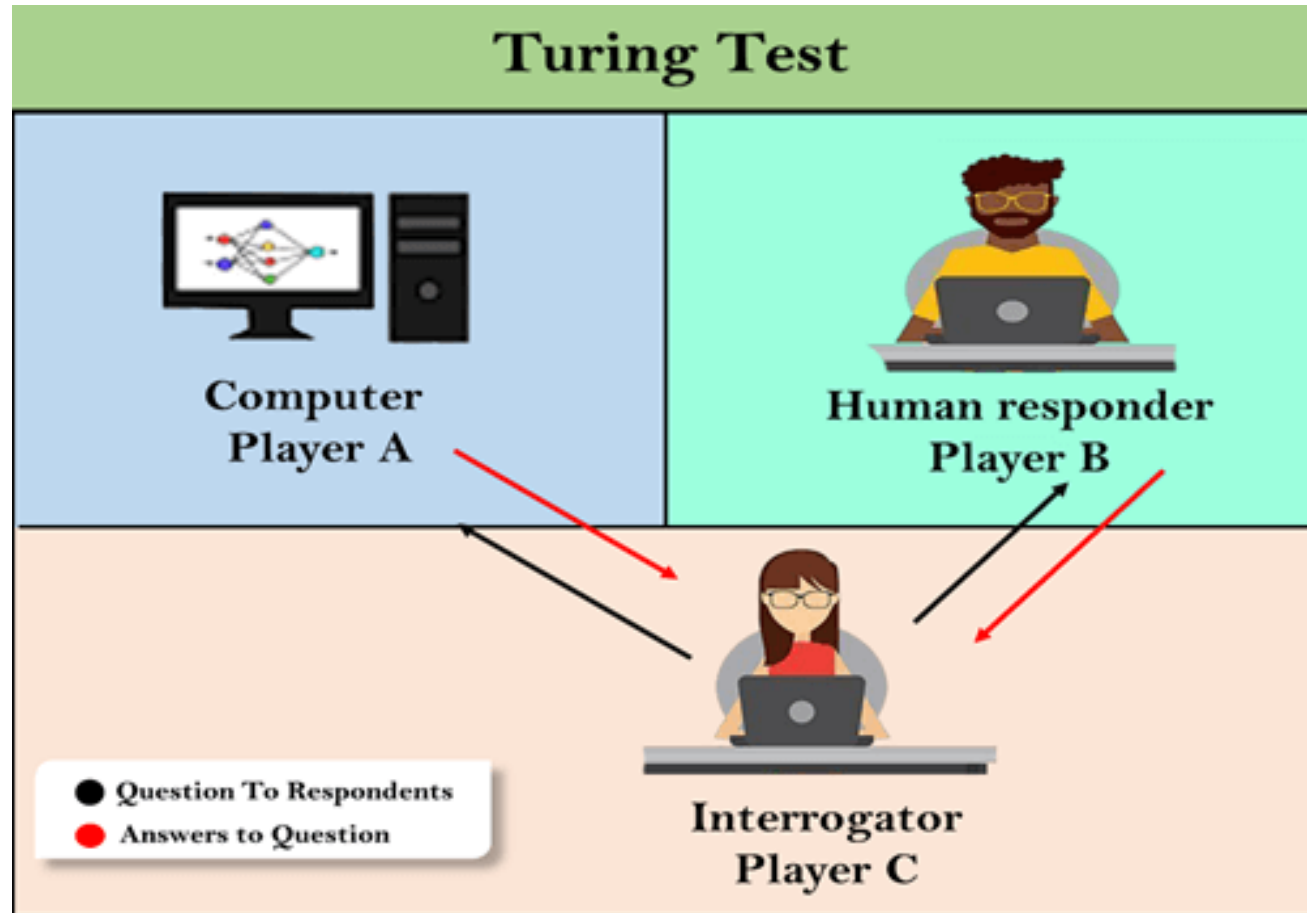
3 Types of Artificial Intelligence

Artificial narrow intelligence refers to AI systems that can only perform a specific task autonomously using human-like capabilities. These machines can do nothing more than what they are programmed to do, and thus have a very limited or narrow range of competencies.

Artificial General Intelligence is the ability of an AI agent to learn, perceive, understand, and function completely like a human being. These systems will be able to independently build multiple competencies and form connections and generalizations across domains, massively cutting down on time needed for training.

Super AI surpasses human intelligence and can perform any task better than a human. It also evokes emotions, needs, beliefs, and desires of its own. Its existence is still hypothetical. Some of the critical characteristics of super AI include thinking, solving puzzles, making judgments, and decisions on its own.

ARTIFICIAL INTELLIGENCE



AI vs DATA SCIENCE vs ML vs DL

