

Hyperlinks

Course Code: CIS121

Module Leader: Md. Rafiqul Huq Rafi

Lecturer (CIS),

Daffodil International University (DIU)

Hyperlinks: <a> Tag

- ◆ Link to a document called `form.html` on the same server in the same directory:

```
<a href="form.html">Fill Our Form</a>
```

- ◆ Link to a document called `parent.html` on the same server in the parent directory:

```
<a href=" ../parent.html">Parent</a>
```

- ◆ Link to a document called `cat.html` on the same server in the subdirectory `stuff`:

```
<a href="stuff/cat.html">Catalog</a>
```

Hyperlinks: <a> Tag (2)

◆ Link to an external Web site:

```
<a href="http://www.devbg.org" target="_blank">BASD</a>
```

- ◆ Always use a full URL, including "http://", not just "www.somesite.com"
- ◆ Using the target="_blank" attribute opens the link in a new window

◆ Link to an e-mail address:

```
<a href="mailto:bugs@example.com?subject=Bug+Report">Please report bugs here (by e-mail only)</a>
```

Hyperlinks: <a> Tag (3)

- ◆ Link to a document called `apply-now.html`
 - ◆ On the same server, in same directory
 - ◆ Using an image as a link button:

```
<a href="apply-now.html"></a>
```

- ◆ Link to a document called `index.html`
 - ◆ On the same server, in the subdirectory `english` of the parent directory:

```
<a href="../english/index.html">Switch to  
English version</a>
```

Hyperlinks and Sections

- ◆ Link to another location in the same document:

```
<a href="#section1">Go to Introduction</a>  
...  
<h2 id="section1">Introduction</h2>
```

- ◆ Link to a specific location in another document:

```
<a href="chapter3.html#section3.1.1">Go to Section  
3.1.1</a>  
  
<!-- In chapter3.html -->  
...  
<div id="section3.1.1">  
  <h3>3.1.1. Technical Background</h3>  
</div>
```

Hyperlinks – Example

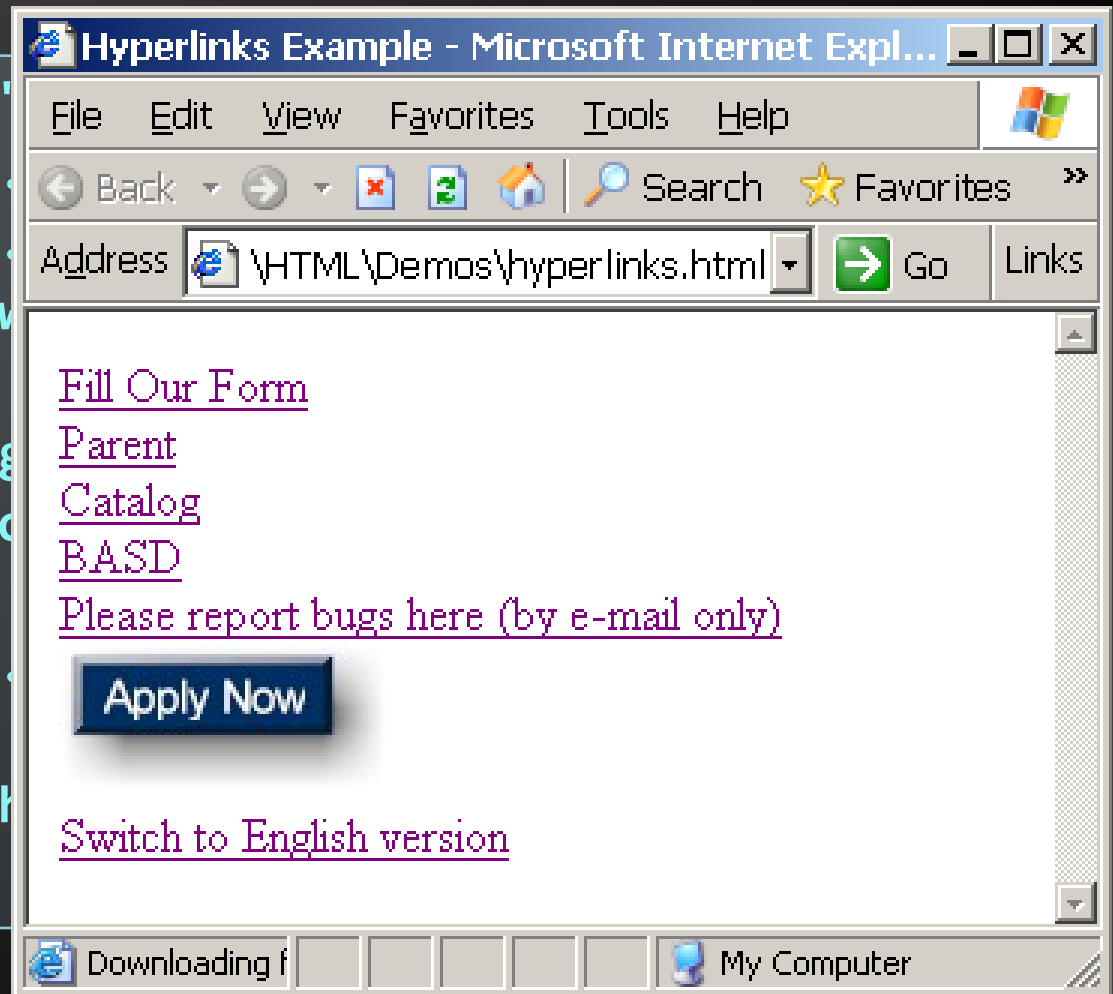
hyperlinks.html

```
<a href="form.html">Fill Our Form</a> <br>
<a href=" ../parent.html">Parent</a> <br>
<a href="stuff/cat.html">Catalog</a> <br>
<a href="http://www.devbg.org" target="_blank">BASD</a>
<br>
<a href="mailto:bugs@example.com?subject=Bug
Report">Please report bugs here (by e-mail only)</a>
<br>
<a href="apply-now.html"></a> <br>
<a href=" ../english/index.html">Switch to English
version</a> <br>
```

Hyperlinks – Example (2)

hyperlinks.html

```
<a href="form.html">Fill Our Form</a>  
<a href=" ../parent.html">Parent</a>  
<a href="stuff/catalog.html">Catalog</a>  
<a href="http://www.basd.org">BASD</a>  
<br>  
<a href="mailto:bugs@basd.org">Parent Report</a><br>  
<a href="apply-now.html">Apply Now</a>  
<br>  
<a href=" ../english.html">Switch to English version</a> <br>
```



Links to the Same Document – Example

links-to-same-document.html

```
<h1>Table of Contents</h1>

<p><a href="#section1">Introduction</a><br>
<a href="#section2">Some background</a><br>
<a href="#section2.1">Project History</a><br>
...the rest of the table of contents...

<!-- The document text follows here -->

<h2 id="section1">Introduction</h2>
... Section 1 follows here ...
<h2 id="section2">Some background</h2>
... Section 2 follows here ...
<h3 id="section2.1">Project History</h3>
... Section 2.1 follows here ...
```

Links to the Same Document – Example (2)

links-to-same-document.html

```
<h1>Table of Contents
```

```
<p><a href="#section1">Introduction
```

```
<a href="#section2">Some background
```

```
<a href="#section3">History Of The Project
```

```
...the rest of the table of contents...
```

```
<!-- The content of the page -->
```

```
<h2 id="section1">Introduction
```

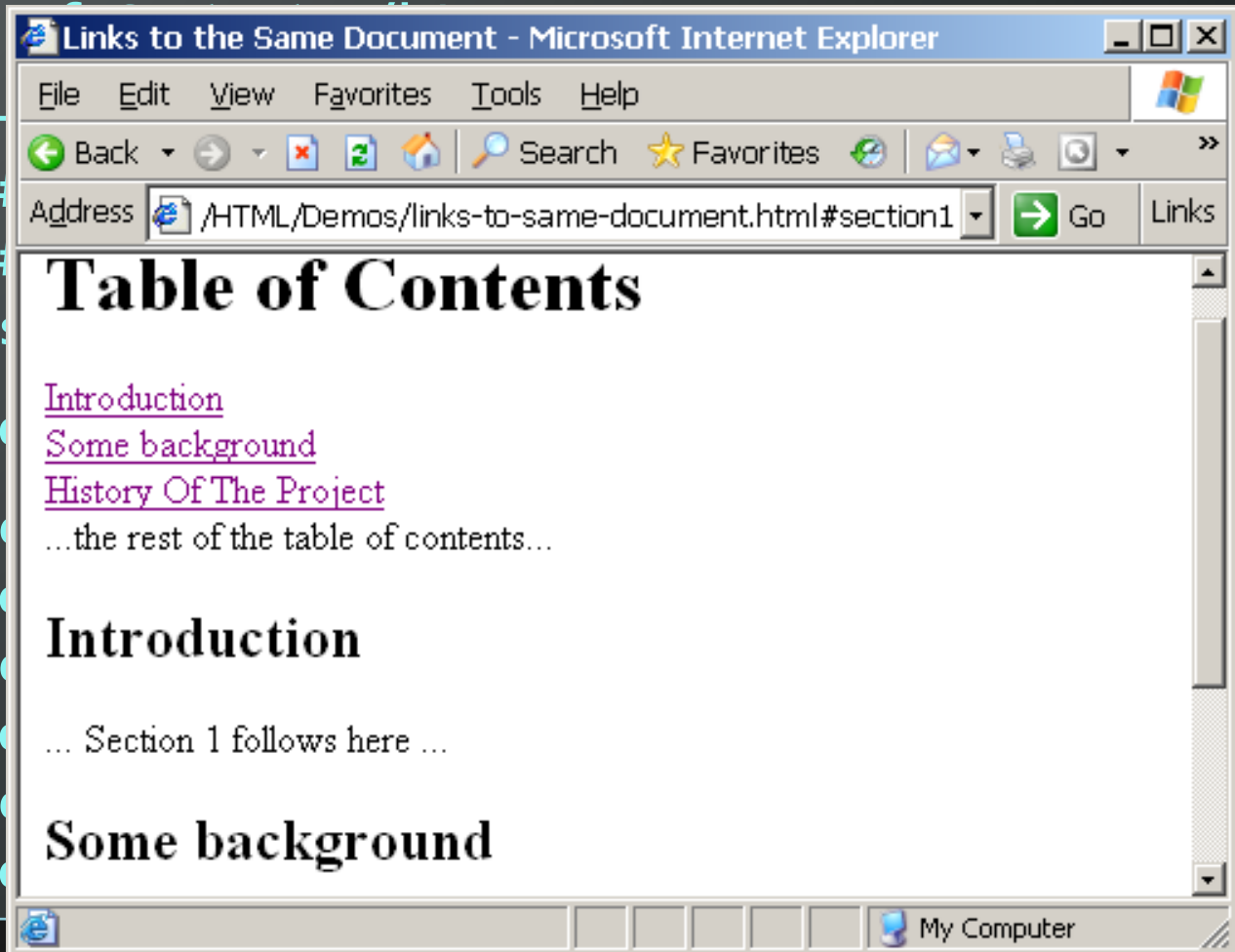
```
... Section 1 follows here ...
```

```
<h2 id="section2">Some background
```

```
... Section 2 follows here ...
```

```
<h3 id="section3">History Of The Project
```

```
... Section 3 follows here ...
```



Uniform Resource Locators (URLs)

- The 'address' of a resource and how it can be retrieved
 - ◆ Specifies the location of document on the web to which we want to create a link
- There are two type of URLs
 - ◆ Absolute
 - ◆ Relative

Absolute URLs - 1

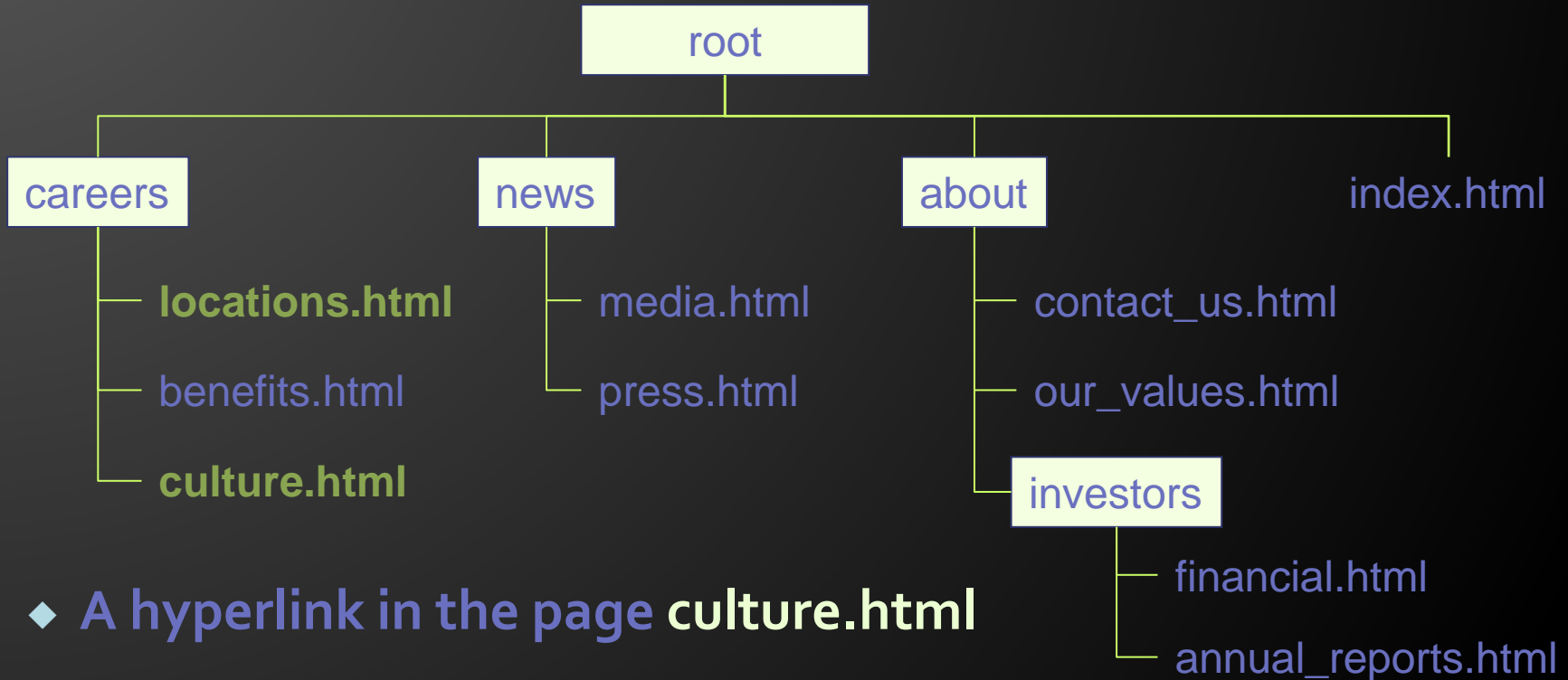
<http://www.nhm.ac.uk/about-us/index.html>

The diagram shows the URL `http://www.nhm.ac.uk/about-us/index.html` with three brackets underneath it. The first bracket is under `http://` and is labeled `protocol`. The second bracket is under `www.nhm.ac.uk` and is labeled `domain`. The third bracket is under `/about-us/index.html` and is labeled `path`.

Relative URLs - 1

- ◆ Relative URLs describe the location of a document relative to the current document's location.
- ◆ Relative URLs are when linking pages together in the *same* site.
- ◆ Internal hyperlinks

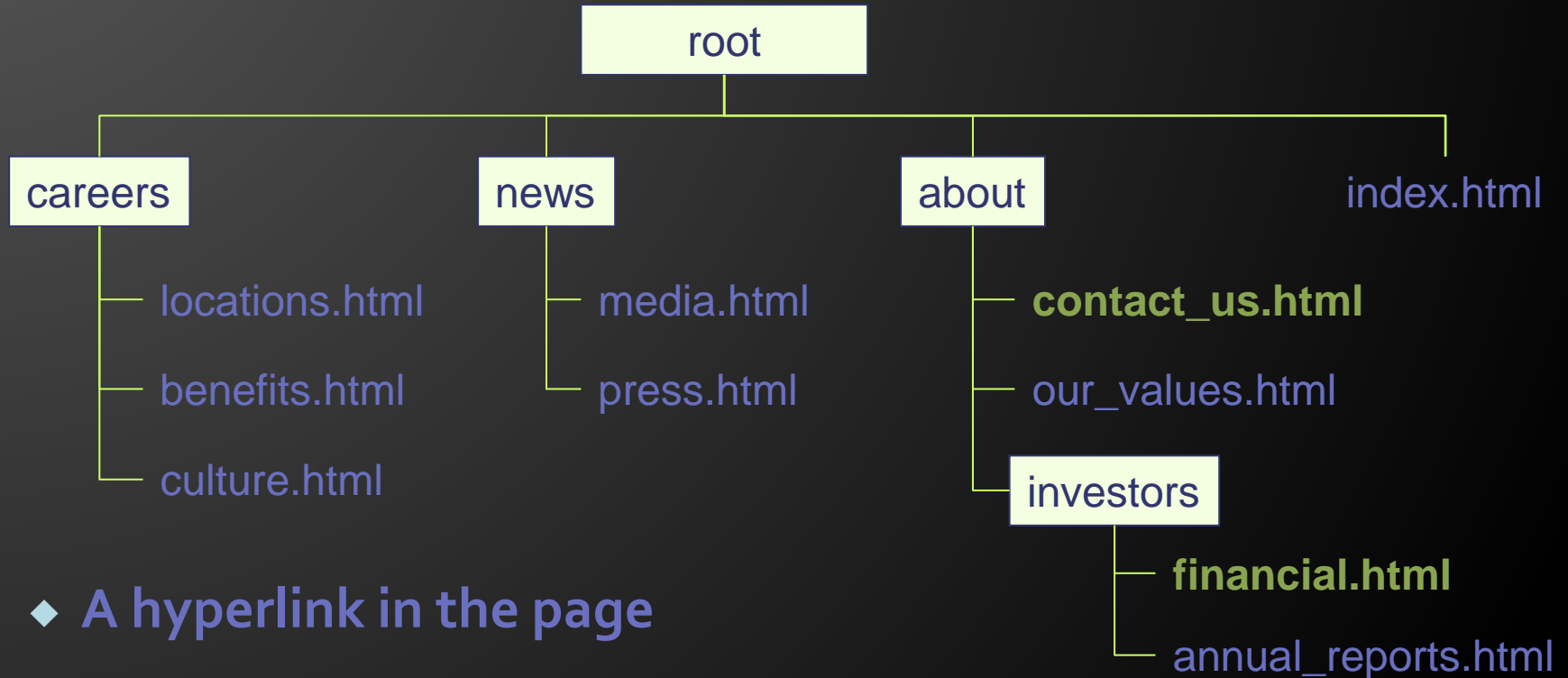
Relative URLs - 2



- ◆ A hyperlink in the page **culture.html** that links to the page **locations.html** would look like

```
<a href="locations.html">locations</a>
```

Relative URLs - 3



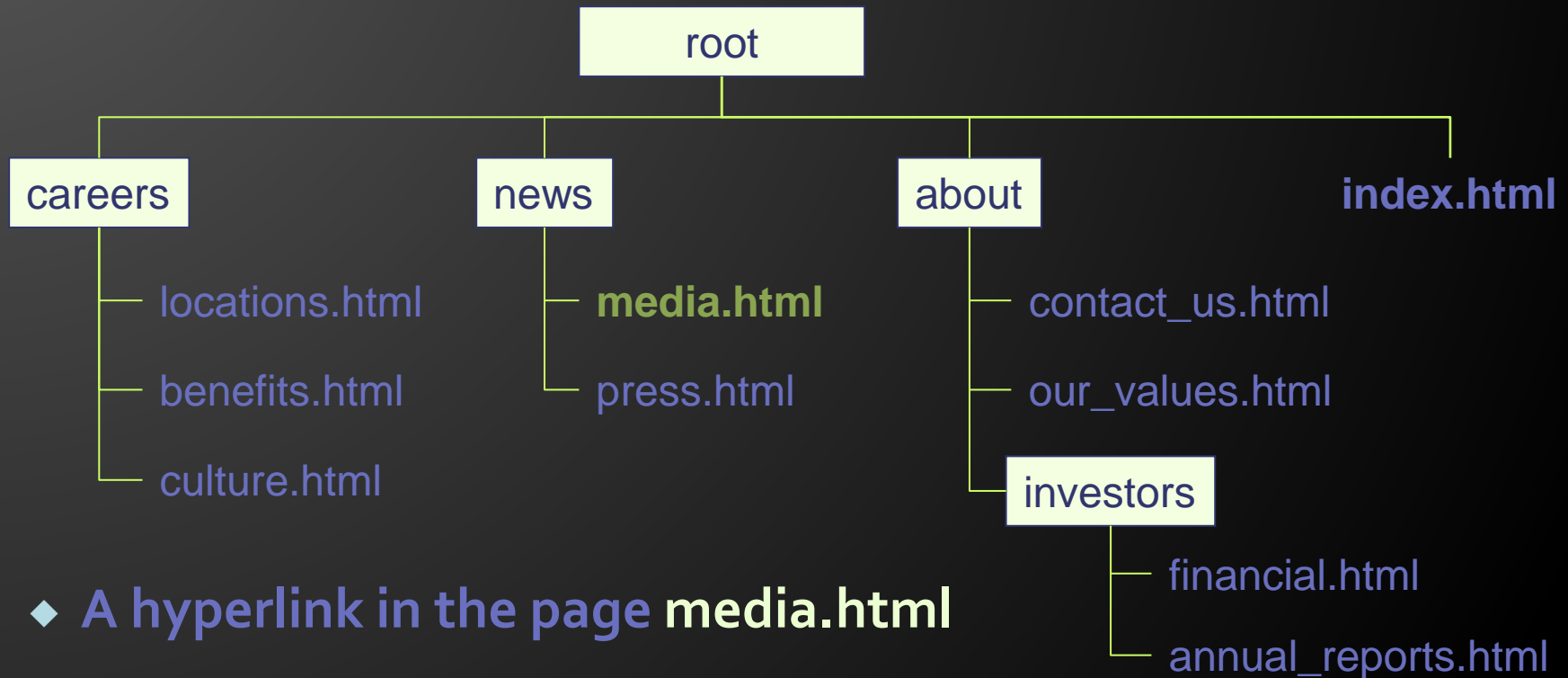
- ◆ A hyperlink in the page

contact_us.html that links to the page

financial.html would look like

```
<a href="investors/financial.html">financial</a>
```

Relative URLs - 4



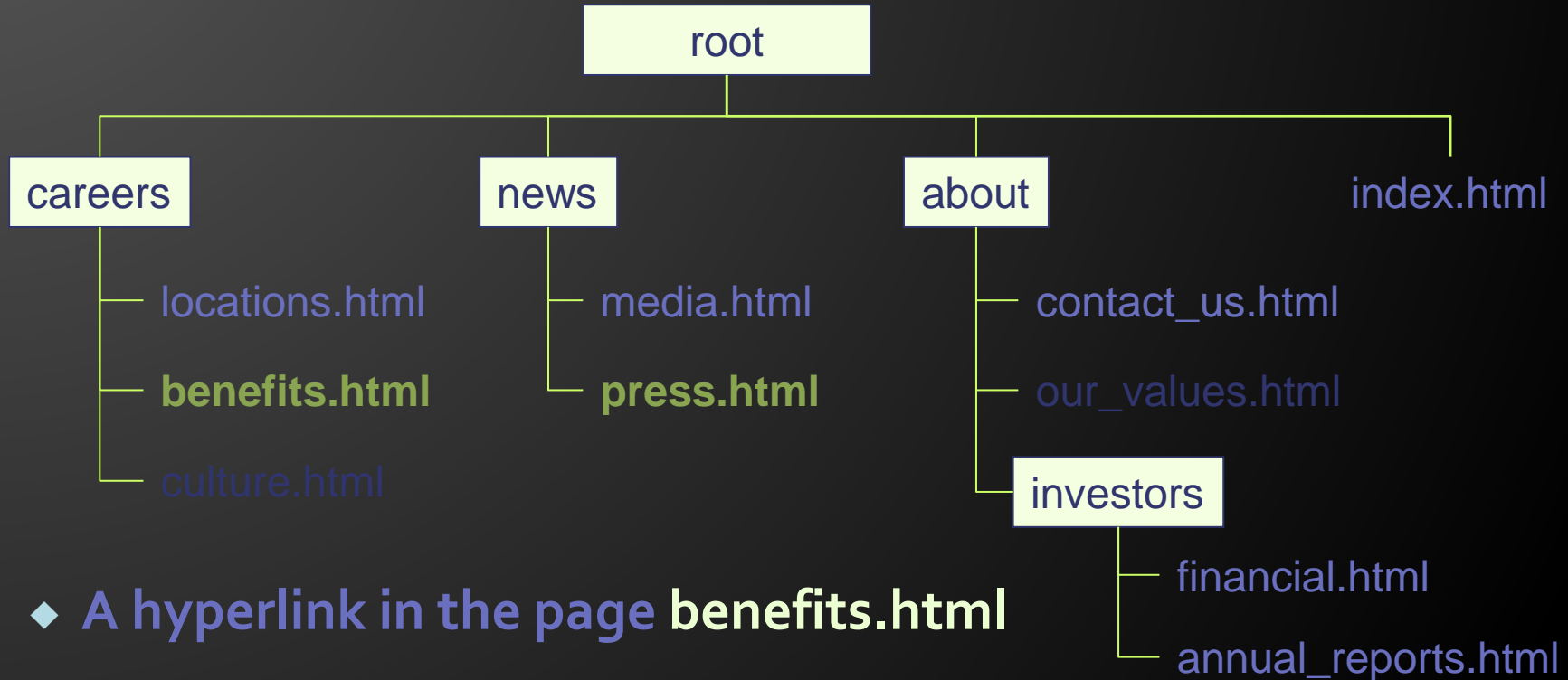
- ◆ A hyperlink in the page **media.html**

that links to the page **index.html**

would look like

```
<a href=" ../index.html">Home</a>
```

Relative URLs - 5



- ◆ A hyperlink in the page **benefits.html** that links to the page **press.html** would

look like

```
<a href=" ../news/press.html">Press Releases</a>
```

Access Keys - 1

```
<a href="careers.html" accesskey="c">Ccareers</a>
```

- ◆ The **accesskey** attribute allows us to associate a specific key with a hyperlink.
- ◆ Pressing a modifier key and the specified access key will make the browser follow the hyperlink.
 - ◆ In Firefox, the modifier keys are **Alt+Shift**.
 - ◆ In IE and Chrome, the modifier key is **Alt**.

Access Keys - 2

- Access keys suffer from a number of problems
 - ◆ Different browsers use different modifier keys.
 - ◆ Conflict with browser shortcuts
 - Access keys often use numbers to avoid this.
 - ◆ How does the user know what the access keys are?
 - Provide a list of hyperlinks and their access keys.
 - Use CSS to underline a specific letter in the link text.
 - Indicate the access key after the hyperlinks.

Access Keys - 3

Shortcut to use access key: The table describes the shortcut to use access key.

Browser	Windows	Mac	Linux
Google Chrome	Alt + single_character	Command + Alt + single_character	Alt + single_character
Mozilla Firefox	Alt + Shift + single_character	Command + Alt + single_character (On Firefox 14 or newer) Command + single_character (On Firefox 13 or older)	Alt + Shift + single_character
Internet Explorer	Alt + single_character	N/A	N/A
Safari	Alt + single_character	Command + Alt + single_character	N/A

Tab Order

```
<ul>
<li><a href="careers.html" accesskey="c">Careers</a></li>
<li><a href="news.html" accesskey="n">News</a></li>
<li><a href="about.html" accesskey="a" tabindex="10">About</a></li>
<li><a href="contact.html" accesskey="u">Contact Us</a></li>
</ul>
```

- The **tabindex** attribute can be used to override the default tabbing order in a browser.
- The **tabindex** attribute also has problems.
 - ◆ Can be confusing for user if their tabbing jumps them in an unexpected order.

Mobile Devices and Hyperlinks

- ◆ Users with mobile devices often experience similar problems as disabled users.
 - ◆ E.g. navigating through the keypad
 - ◆ Skip links can be useful
- ◆ Use of access keys is often recommended for sites designed for mobile users.
 - ◆ Using numbers
 - ◆ Used consistently can make the site easier to use